

START-UP GUIDE

DESSALATOR® AC PRO COMPACT – D90 to D200

90 to 200 liters/hour – 230V (or 400V)



Dessalator®

ZI des 3 Moulins, 282 rue des Cistes

Bâtiment Euro 92

06600 Antibes

www.dessalator.com

contact@dessalator.com

 **DESSALATOR®**
watermakers - dessalinisateurs

Procedure for commissioning the Dessalator®

Important step prior to starting-up:



Before starting up, check that the valves are open.


Mandatory steps:

- When using the device for the first time, or after changing the filter, or after the boat has been grounded or stopped for a long time, you should flush the system using fresh water by operating the three-way valve on the prefilter (*see Appendix at the end*). This operation must be carried out for 2 minutes with the watermaker stopped and the pressure regulator open (1/4 turn counterclockwise, before the left stop).
- Once the system is fully filled, put the valve back in seawater position (*see Appendix at the end*).

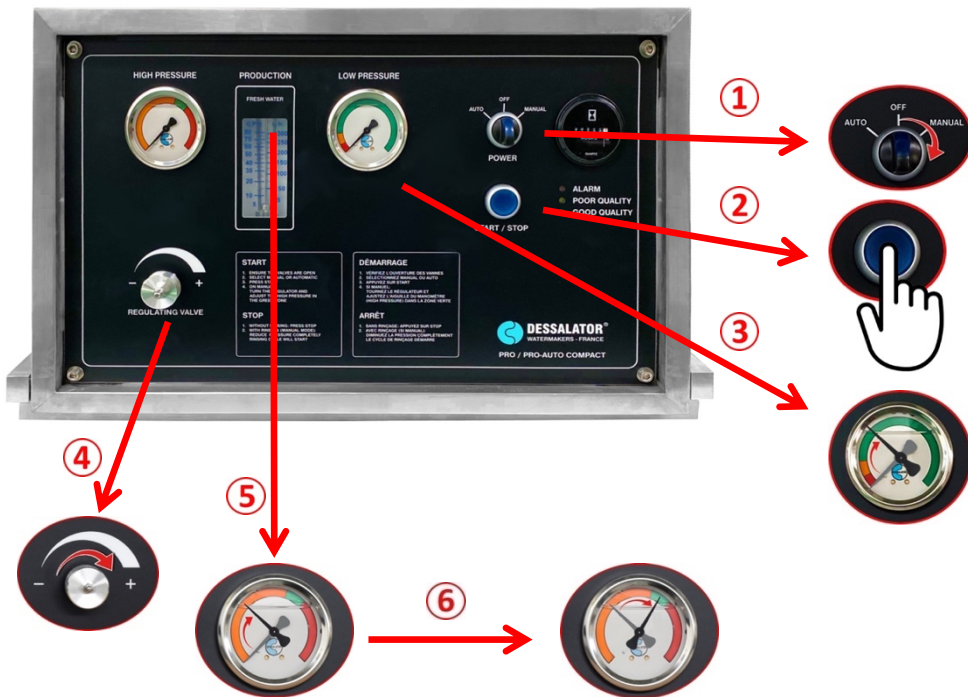
➡ Note : If the watermaker remains stopped for more than 1 month, it is advisable to either sterilize the membranes for storage (for a maximum of 6 months) or to rinse at least every month. Before restarting the system, it is also advisable to rinse it for 2 minutes.

First start-up of the watermaker :

Set the switch ① to « MANUAL » et push on « START » ② or on the Mini-Commande or Micro-Command (optional)

- press  until you hear 2 confirmation beeps. The pre-pump starts, the needle on the low pressure manometer ③ rises in the green zone. Once the engine has started, gradually turn the pressure regulator knob ④ to the right to increase the pressure towards the middle of the orange zone ⑤ then continue gradually increasing the pressure until it reaches the green zone ⑥ on the pressure gauge.

This pressure build-up procedure should last approximately 1 minute.



➔ **Note :** Too high a pressure setting stops the watermaker and turns on the red light. In this case, decrease the pressure with the pressure regulation knob ④ and repeat the startup procedure.

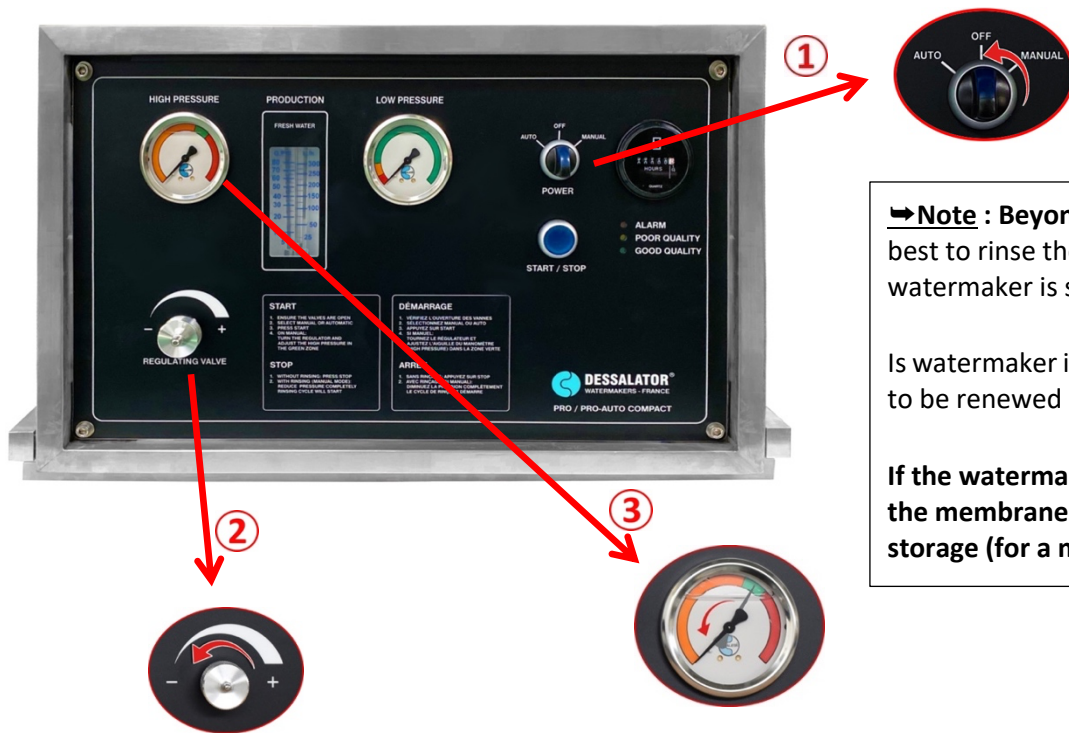
The fresh water yield depends on the temperature and salinity of the sea water and the cleanliness of the 5 & 25 micron filters (in the pre-filter).

Stopping the watermaker: without rinsing of the membranes

Set the switch ① to « OFF » or on the Mini-Command press on  (optional).

You can now lower the pressure regulator knob ② to the left (counterclockwise) until the needle of the high pressure gauge ③ is at the minimum.

Once the knob has come to a stop, reopen the pressure regulator knob ② by only ¼ of a turn (to the right).



➔ **Note** : Beyond 10 days without use, it is best to rinse the membranes before the watermaker is started-up again

Is watermaker is not used, the rinsing is to be renewed every month.

If the watermaker is not used completely, the membranes must be sterilized for storage (for a maximum of 6 months).

Stopping the watermaker : with automatic rinsing of the membranes:

A rinsing must be carried out if the watermaker is not going to be used for more than 10 days.

After using the watermaker, **do not turn it off.**

While the watermaker is still running, Start turning the knob of the pressure regulator ① (counterclockwise) to engage the rinsing mechanism, the pressure of the manometer will drop ②.

Once you have reached the end stop, reopen the pressure regulator knob ① by only ¼ turn (to the right).

The watermaker will stop producing water and will start the rinsing procedure. The green and yellow LEDs on the control panel will light up, indicating that the rinsing procedure has started. This should last 30 seconds and stop automatically.

The green and yellow LEDs will turn off and the only remaining indicator will be the flashing blue LED on the ON/OFF switch ③, you can turn off the system by position the switch ③ to « OFF ».

Automatic rinsing is the best way to rinse your system because it not only replaces seawater with fresh water, but it also washes your pre-filter and allows discharge to the sea through the suction through-hull all dirt and debris accumulated in the filters.



➔ **Note : Beyond 10 days without use, it is best to rinse the membranes before the watermaker is started-up again**

Is watermaker is not used, the rinsing is to be renewed every month.


If the watermaker is not used completely, the membranes must be sterilized for storage (for a maximum of 6 months).

Using the Mini-Command or Micro-Command (optional)

Once you start-up the system for the first time using the control panel, you can use the Mini Remote Control to perform the following: monitor the state of the system, stop or schedule a delayed shutdown.



Stopping the watermaker WITHOUT rinsing of the membranes:

Directly on the Mini-Command (or Micro-Command) by pressing the  button until you hear 2 confirmation beeps that indicate that the watermaker is going to shut down and enter stand-by mode.

➔ **Note:** Only the **AUTOMATIC** versions are capable of restarting the system directly from the Mini-Command (or Micro-Command).

Appendix :



- 1** The valve is in the seawater position for use in desalinization mode.
- 2** The valve is in the closed position, to change the filter cartridge or isolate the water circuit.
- 3** The valve is in the fresh water position for manually rinsing the circuit with fresh water or for performing sterilization.

Your DESSALATOR® is equipped with automated rinsing.