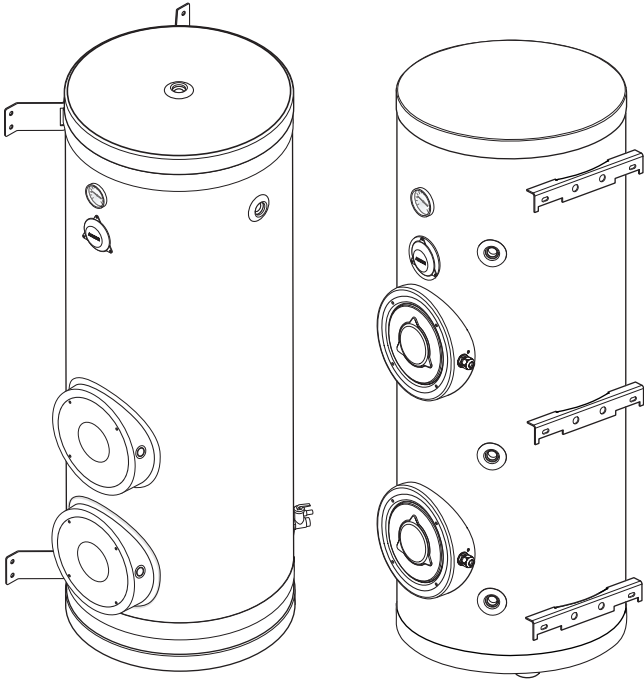


# BK Series

REV 000A | CE | UK  
CA

## BK SERIES WATER HEATER WITH DOUBLE ELECTRIC ELEMENT BK2 160 - 200 BK3 200



EN\* INSTALLATION AND USE MANUAL

\*Other languages available by scanning the QR code on the back of this manual or on the label on the product.





<b>1 - Information about the product</b>	<b>4</b>
1.0 - Model code	4
<b>2 - Supply and equipment</b>	<b>5</b>
2.0 - Standard supply and material included in the package	5
<b>3 - Introduction</b>	<b>5</b>
3.0 - Important notes	5
3.1 - Precautions	5
3.2 - Precautions for the installer	5
<b>4 - Installation / Use</b>	<b>6</b>
4.0 - Installation requirements	6
4.1 - Installation procedure	6
4.2 - Use	6
4.2.0 - Power supply of the equipment	6
4.2.1 - Thermostat setting	8
<b>5 - Wiring diagram</b>	<b>9</b>
<b>6 - Maintenance</b>	<b>10</b>
<b>7 - Product disposal</b>	<b>11</b>
<b>8 - Dimensions</b>	<b>12</b>



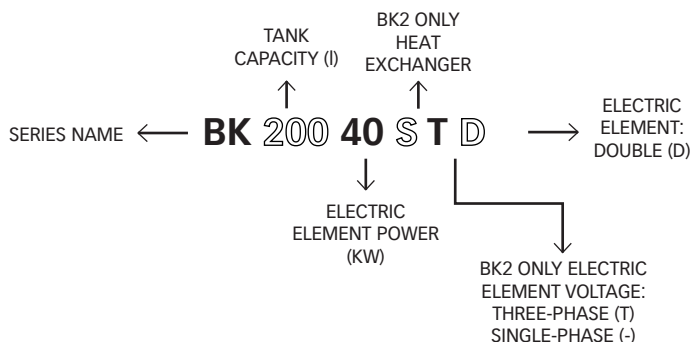
QUICK® RESERVES THE RIGHT TO MODIFY THE TECHNICAL CHARACTERISTICS OF THE EQUIPMENT AND THE CONTENTS OF THIS MANUAL WITHOUT PRIOR NOTICE. IN CASE OF DISCORDANCE OR ERRORS IN TRANSLATION BETWEEN THE TRANSLATED VERSION AND THE ORIGINAL TEXT IN THE ITALIAN LANGUAGE, REFERENCE WILL BE MADE TO THE ITALIAN TEXT.

## NAUTIC WATER HEATER

Our long experience in the nautical sector has enabled us to develop a series of water heaters with innovative features compared to the market standard. The advantages that Quick® nautic water heaters offer are:

- High-quality materials ensuring durability and resistance over time.
- Heat exchanger with a large exchanging surface. (BK2 only)
- Possibility of producing hot water even with the electric element, complete with adjustable and safety thermostat.
- Relief/non-return valve that allows the water heater to drain the water when not in use.
- Easy installation on a flat area.

### 1.0 - Model code



MODELS		BK2 160	BK2 200	BK3
TANK CAPACITY	Litres	160	200	200
	US gallon	42.27	52.84	52.84
Tank material		AISI 316L		AISI 316L
Thermal insulation material		Polyurethane foam		
External cladding material		GREY SKAI		
Tank pressure during testing		800 kPa <sup>(1)</sup>		
Maximum working pressure		1000 kPa <sup>(1)</sup>		
Electric element voltage rating		230 Vac ± 10% - 400 Vac ± 10%		
Electric element power rating		2 x 2 KW [Model 02] - 2 x 4 KW [Model 04]		
Fittings diameter		3/4" - [1" exchanger]		
Weight <sup>(2)</sup>	Kg	44	52	53
	Lb	97	114	116

(1) 1 Bar = 100 kPa • (2) with equipment vacuum



### 2.0 - Standard supply and material included in the package

- Water heater
- Floor or wall-mounting brackets (optional for BK2, integrated for BK3)
- Various screws and hardware (for assembly)
- User's manual
- Conditions of warranty.



## 3 - Introduction

BEFORE USING THE PRODUCT, PLEASE READ THIS USER'S MANUAL CAREFULLY. IF IN DOUBT, PLEASE CONSULT YOUR QUICK® DEALER.

### 3.0 - Important notes

This manual features Warning and/or Caution symbols that are important for safety. Stick to the given instructions.



**Warning** symbol for **dangerous situations**.



**Caution** symbol to prevent direct or indirect damage to the product.

This document provides boat manufacturers and nautical equipment installers with instructions on how to assemble the water heater and operate it correctly.

#### 3.1 - Precautions



- Use the product only for the applications described in this manual.
- Do not use these products for any other type of operation.
- Quick® shall not be held liable for direct or indirect damage caused by improper use of the product.
- Before connecting the equipment, make sure that cables are not live.
- This equipment is not intended for use by people (including children) with reduced physical, sensory or mental capabilities. Quick® SpA shall not be held liable for direct or indirect damage caused by improper use of the equipment.
- Never switch on the electric element if the product is not filled with water, otherwise the heating element could be irreversibly damaged.

#### 3.2 - Precautions for the installer



##### **CARRY OUT THE INSTALLATION IN GOOD LIGHTING CONDITIONS.**

It is advisable to wear suitable clothing and personal protective equipment (PPE).

The water heater is not suitable for installation in potentially explosive environments and/or atmospheres.  
Installation and subsequent inspection or repair work must only be carried out by qualified personnel.



##### **CARRY OUT INSTALLATION/MAINTENANCE WORK MAKING SURE THAT THE PRODUCT IS DISCONNECTED FROM THE ELECTRICAL SYSTEM.**

Quick accepts no responsibility for inadequate connection of users to the electrical system and inadequate safety of the electrical system.

## 4.0 - Installation requirements

The water heater must be installed in a dry and well-ventilated place. This precaution is necessary, even if the water heater is made of materials resistant to the marine environment, due to the presence of electrical devices (in models equipped with them). In addition, installation in an unventilated place may cause condensation; condensation may be mistaken for a false leak.

## 4.1 - Installation procedure

**A** - Apply the brackets to the tank (1).

**B** - Fix the water heater to a flat surface as shown in figure 1 using supports suitable for the weight of the water heater and the type of surface available for installation.



**WARNING:** the weight of the water heater indicated in the technical specifications refers to empty equipment. For the weight when fully loaded, add the weight of the mass of water filled in the equipment to the weight when empty (1 litre of water corresponds to approximately 1 kg / 2.2 lb).

**C** - Make the hydraulic connections for the tap hot water input and output and the engine cooling circuit to the heat exchanger (in models featuring it) as shown in figure 2. The connection between the engine cooling circuit and the water heater exchanger should be as short as possible.



**WARNING:** the overpressure release pipe must be positioned on a continuous downward slope and in a place protected from ice formation.

**WARNING:** water may drip from the overpressure stub pipe; leave this pipe open so that it can drain the water in the atmosphere.

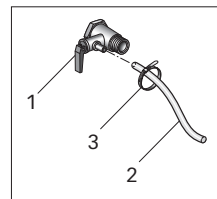
**WARNING:** use Loctite 243, 577 or Teflon when installing the fittings.  
Check that there are no water leaks.

## 4.2 - Use



**WARNING:** follow the engine manufacturer's instructions to withdraw the coolant to be sent to the water heater exchanger.

- Position the stub pipe (2) of the valve (1) securing it with the clamp (3). Position it in such a way that any spillage of water will not damage other objects.
- Open the hot water taps of the washbasins and start the water pump. This allows the air in the water heater and in the pipes to flow out. Close the taps as soon as only water starts to flow out.
- Check that there is no leakage from the fittings.



## 4.2.0 - Power supply of the equipment

For connections to the AC network, see the wiring diagram on page 8. Before supplying power to the water heater, make sure that its operating voltage corresponds to that supplied by the AC network. A double pole switch must be installed in the electrical system to turn the equipment on and off as well as a fuse suitable for its input.

The insulation material between the contacts of the connections to the AC network must be at least 3 mm. Connections to the AC network must be made in accordance with the national standards on electrical systems.



**Before connecting the equipment, make sure that cables are not live.**

Never switch on the electric element if the water heater is NOT filled with water, otherwise the heating element could be irreversibly damaged.



FIG.1

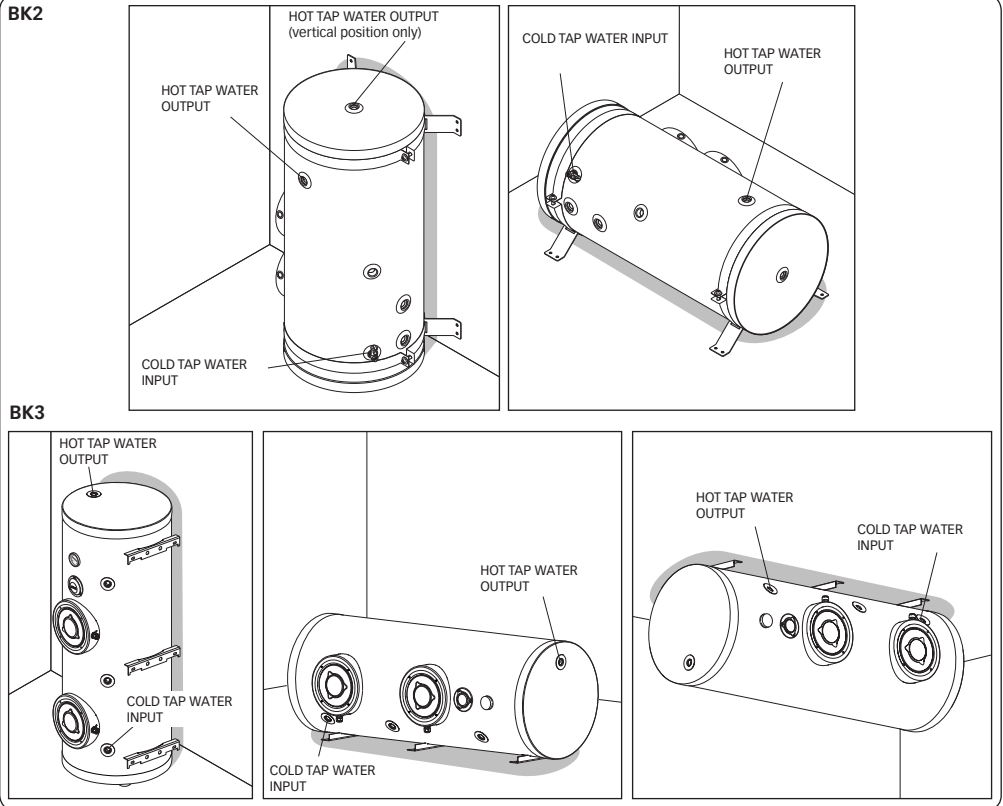
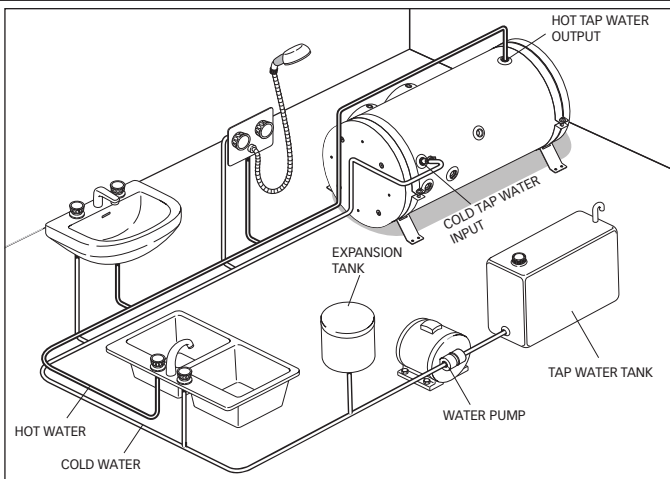


FIG.2



## 4.2.1 - Thermostat setting

The thermostat factory-set temperature value is 60°C.  
If you wish to change this value, follow the procedure below:

### SINGLE-PHASE

- interrupt the power supply.
- Remove the protection cover (4) to reach the thermostat (5) (fig. 3).
- Use a screwdriver to turn the thermostat knob and set the desired temperature value (fig.4).
- Refit the protection cover (4).
- Restore the power supply.

FIG.3

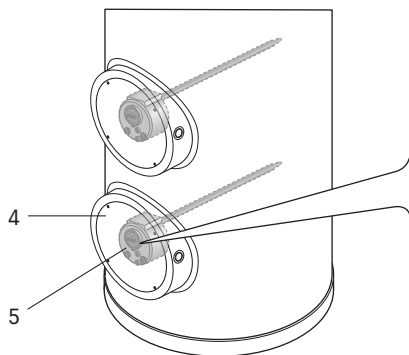
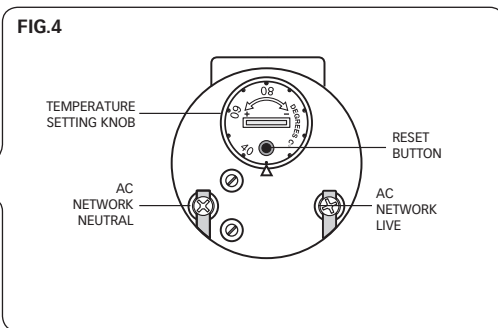
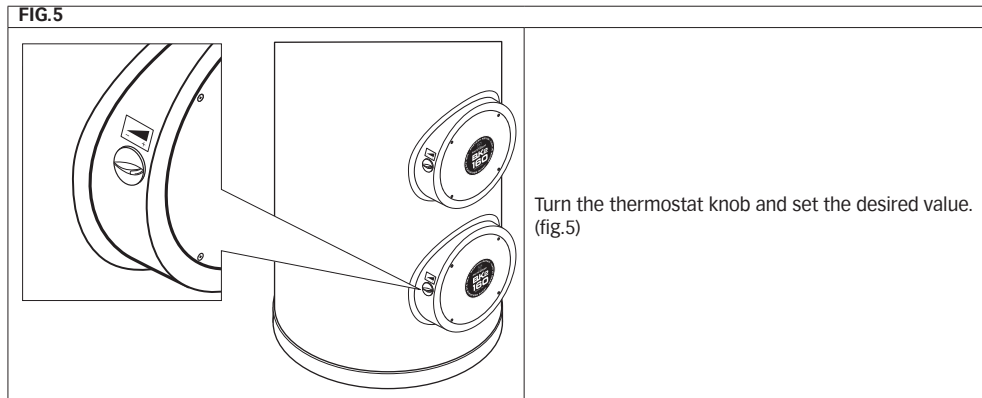


FIG.4



### THREE-PHASE

FIG.5

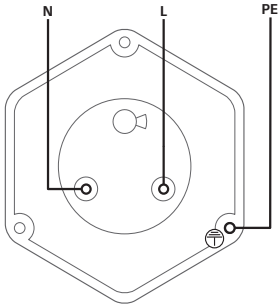


The thermostat regulates the water temperature only when operating with electric element.

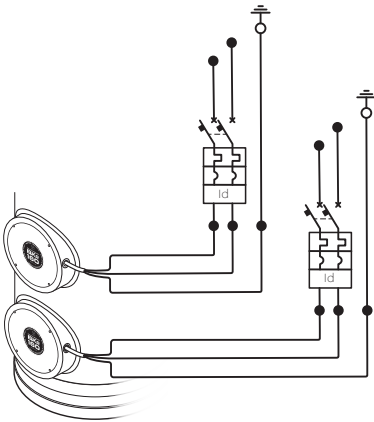




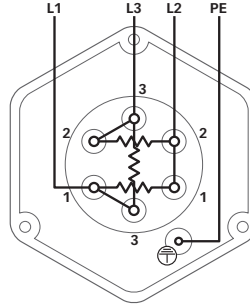
### SINGLE-PHASE WIRING DIAGRAM



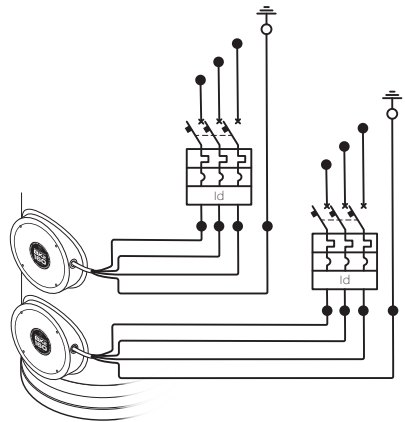
### SINGLE-PHASE 2000 WATT CONNECTION



### THREE-PHASE WIRING DIAGRAM



### THREE-PHASE 4000 WATT CONNECTION





**WARNING:** Quick® water heaters are equipped with a double thermostat with manual reset that cuts off the power supply in the event of too a high water temperature. If this condition occurs, proceed as follows:

**PROCEDURE for SINGLE-PHASE manual reset:**

- Interrupt the power supply
- Remove the protection cover (4, fig.6) to reach the thermostat.
- Use a screwdriver to turn the thermostat knob 5 (fig. 7) and set the maximum temperature value.
- Press the reset button on the double thermostat (fig.7).
- Use a screwdriver to turn the thermostat knob (fig.7) and set the desired temperature value.
- Refit the protection cover (4).
- Restore the power supply.

FIG.6

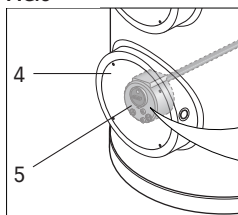
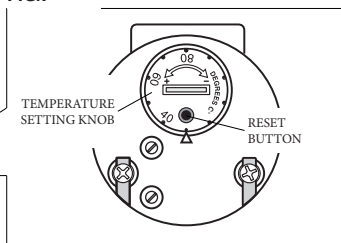


FIG.7



**THREE-PHASE:** The three-phase thermostat is provided with a manual reset device.

**WARNING:** if the overtemperature safety device is triggered repeatedly during the use of the water heater, contact a quick® service centre.

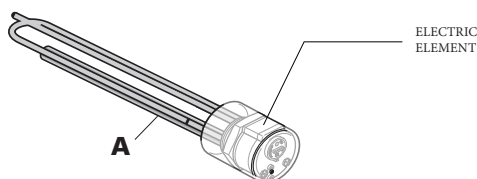


**WARNING:** if the power cable is damaged, have it replaced at a Quick® service centre. To avoid accidents, the equipment must only be opened by authorised personnel. The warranty will be void if the equipment is opened by unauthorised personnel.



It is advisable to check the magnesium anode (A) every 12 months. Replace it if deteriorated. This simple preventive maintenance guarantees a long equipment life over time.

- During the cold season, if the water heater is not in use, it is advisable to empty it using the valve lever. This is to avoid damage caused by frost.
- Periodically check the hydraulic system fittings for leaks; check the tightness of the fastening screws and replace them if they are worn out or corroded.
- Periodically check the efficiency of the electrical system.





As with installation, at the end of this product life, dismantling must be carried out by qualified personnel.

This product is made up of various materials, some can be recycled and others must be suitably disposed of; enquire about the recycling or disposal systems provided for by local regulations for this product category.

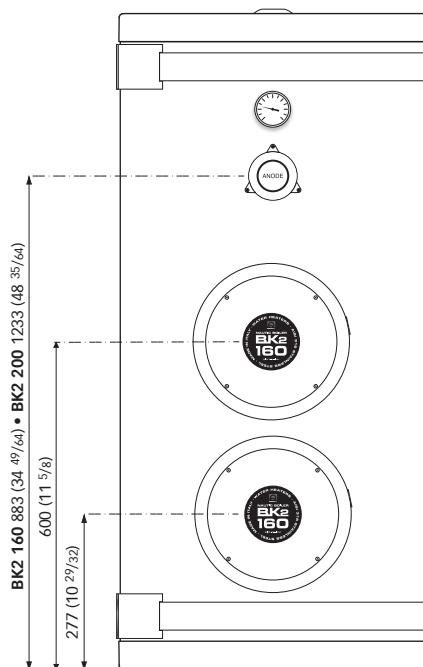
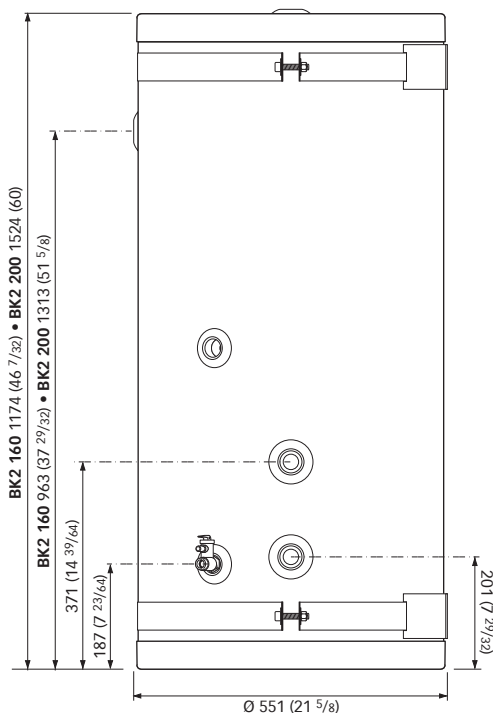
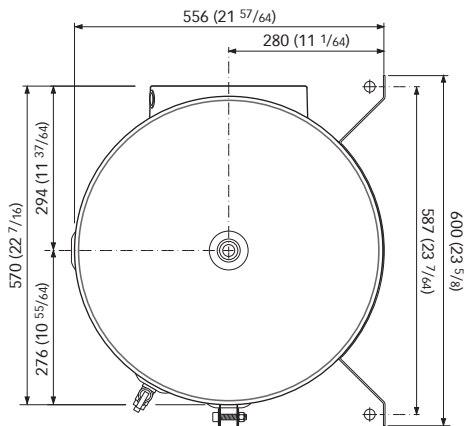
Some parts of the product may contain pollutants or hazardous substances that, if dispersed, may be harmful to the environment and human health.



As indicated by the symbol on the side, it is forbidden to dispose of this product as domestic waste. Separate the products for disposal in accordance with the regulations in force in your area or return the product to the seller when purchasing a new equivalent product. Local regulations may impose severe penalties for the improper disposal of this product.

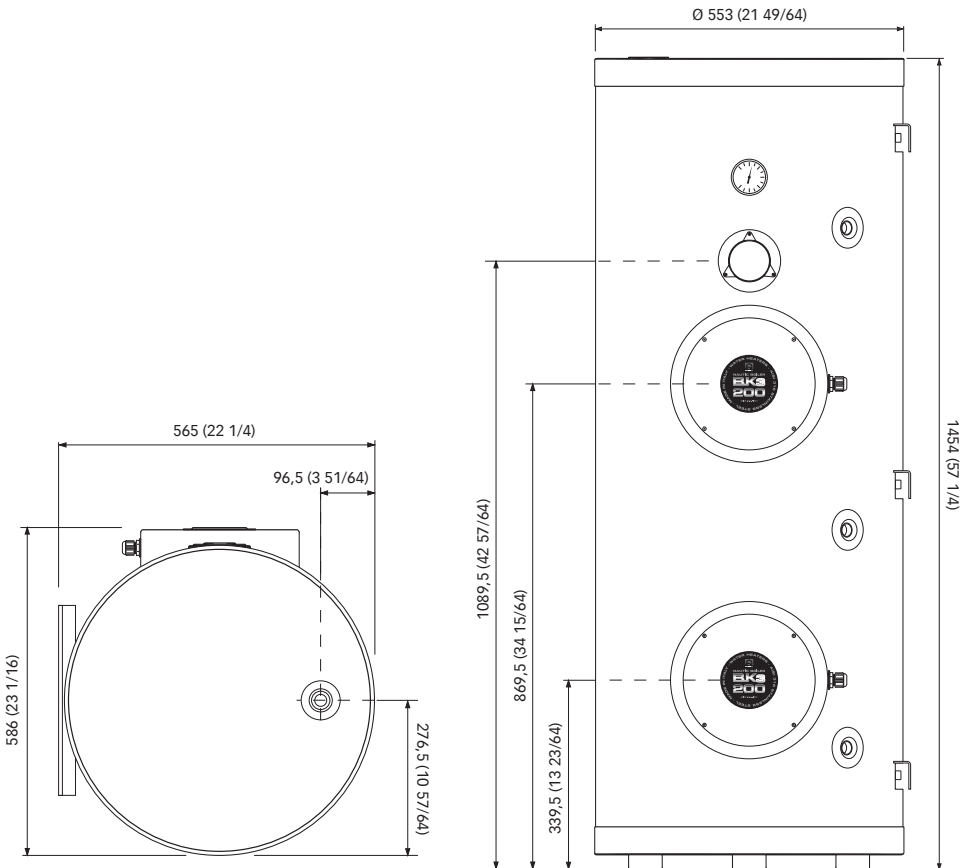


# BK2 160/200 L





# BK3 200 L





A series of horizontal dotted lines for taking notes.



A series of horizontal dotted lines for taking notes.

# BKSeries

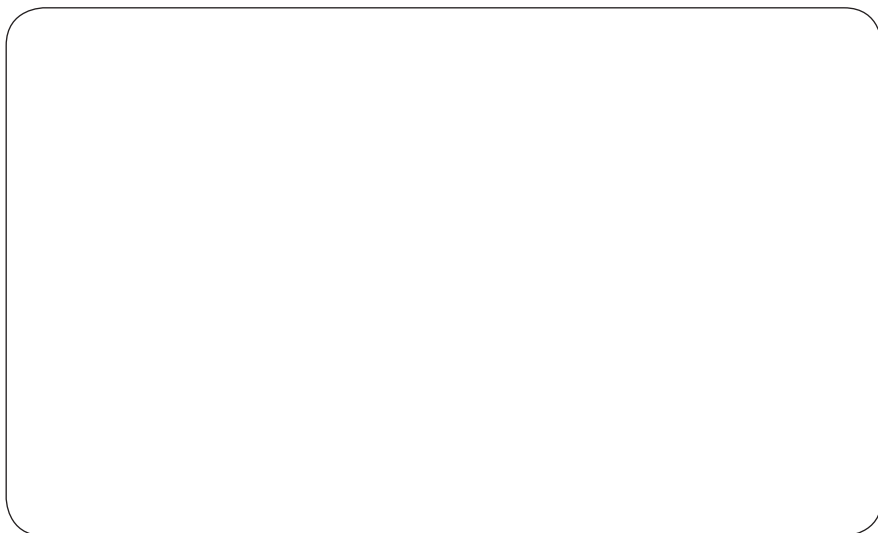
REV 000A



## BK SERIES WATER HEATER WITH DOUBLE ELECTRIC ELEMENT

BK2 160 - 200

BK3 200



Product serial number



QUICK® S.p.A. - Via Piangipane, 120/A - 48124 Piangipane (RAVENNA) - ITALY  
Tel. +39.0544.415061 - Fax +39.0544.415047 - [www.quickitaly.com](http://www.quickitaly.com) - [quick@quickitaly.com](mailto:quick@quickitaly.com)